

Obituary Product Offerings

Funeral Homes that partner with Tributes.com enjoy cutting-edge online obituary products, which help them enhance the memorialization experience, increase funeral event interaction & develop long-term engagement at their website with the family, the community and the virtual community. Tributes provides easy-to-use-tools for funeral home staff and works closely with funeral home owners to help them develop short and long-term contributions to the bottom line.

In an effort to meet the varying needs of funeral homes across the country we offer two distinct products and two pricing programs which allow you to select the solution that best suits you. Our focus is to continuously develop and improve our obituary offerings so you have *the* best-in-class solution and can focus on what you do best: taking care of the family, the deceased and the community. We'll keep you at the forefront of this fast-changing digital world and advise you how to leverage technology to grow and promote your business.

Products *featuring:*



OBITUARY



ETERNAL TRIBUTE

	UNLIMITED LIFETIME	UNLIMITED LIFETIME
Obituary Text (Term)		
Photos	1	UNLIMITED
Slideshow		●
Memory Book	LIFETIME	LIFETIME
Virtual Candles	●	●
Virtual Gifts	●	●
Audio Memories	●	●
Photo Upload		●
Highlighted Service Information	●	●
Customized Donation Information	●	●
Forward Obits to Email Contacts <small>Integration with Social Media Networks (Facebook/Twitter)</small>	●	●
Anniversary Reminders	●	●
Service Emblems (Military and Civic)	●	
Themes (Including Military)		●
Family Message		●
Video Support		●
Links to Other Websites		●
Story Wall		●
Music		●
Custom Web Address		●

Programs

PROGRAM 1 - STANDARD PRICING

	OBITUARY	ETERNAL TRIBUTE
Wholesale Rate	\$20	\$125
Suggested Rate	\$49	\$199
Your Profit	\$29	\$ 74

PROGRAM 2 - ETERNAL TRIBUTE-ONLY

For those funeral home partners that choose to exclusively market our premier Eternal Tribute product only, we offer a **special wholesale rate of \$50.**

The Eternal Tribute-Only pricing program entitles partners to take advantage of our



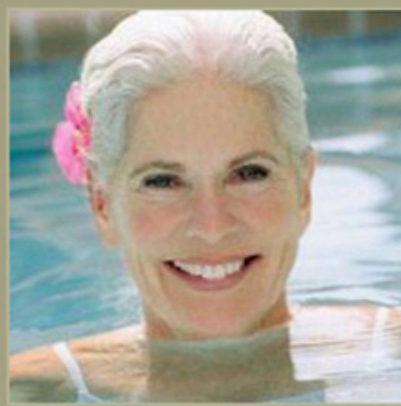
Free DVD creation!

capability which leverages the photos uploaded to the Eternal Tribute to simply and quickly create a beautiful tribute DVD* which can be used during any part of the funeral process, can only be created by funeral home staff and can be included in memorial packages or sold from the GPL.

*Additional DVD copies at no extra charge.

Funeral Home Specific

Obituary Alerts	●	●
Email Address Collection	●	●
After Care Reminders	●	●
Integrated Advertising	●	●
Flowers, Sympathy Gifts and Pre-need Lead Generation		
Custom eCommerce Programs 1800 Flowers, Sympathy, Food	●	●



Margaret Lily Jameson

BORN: November 15, 1942
DIED: October 2, 2008
RESIDENCE: Boston, MA

Set a Reminder for the Anniversary of Margaret's Passing

- Forward to Family & Friends
- Share a Memory
- Add a Photo
- Print
- Contact Support

MEMORIES & CANDLES



"Maggie and I were classmates in high school and involved in several extra-curricular activities together. She was the heart and soul of our class....[Read More »](#)"

1 of 9 | Posted by: Kirk Fuller - Dubsque, IA

View All

Leave A Memory

Leave Audio Memory

Light A Candle



Obituary Info

[View Life Images Slideshow](#)

View Video Tribute

Margaret Lily (Edwards) Jameson passed away on October 2, 2008 at the age of 65.



Service Info

Maggie was born November 15, 1942, in San Pablo, CA. the second of four daughters of Judy Miller Edwards and Robert

own, Kansas where she attended school in 1975. She was her class

VISITATION

October 05, 2008
7:00 PM to 9:00 PM
Tributes Funeral Home
280 Summer Street
Boston, MA

[View Map](#) →

INTERMENT

October 06, 2008
12:00 PM
Greenlawn Cemetery
27 South Street
Boston, MA

[View Map](#) →

FUNERAL SERVICE

October 06, 2008
10:00 AM
St. Mary's Church
100 Main Street
Boston, MA

[View Map](#) →

FUNERAL SERVICE PROGRAM

[More Info](#) →

most of every day, no matter
visited old friends, learned

Multimedia



LIFE TRIBUTE FILMS AND FAVORITE VIDEOS



[Play Video](#) →
[View Description](#) →



[Play Video](#) →
[View Description](#) →



[Play Video](#) →
[View Description](#) →

WEB LINKS



[Morning's Promise by Anne N](#)

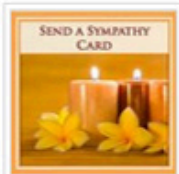
SHARE THIS OB

[Facebook](#) [Twitter](#) [Star](#)

MESSAGE FROM THE

The Jameson family thanks a wonderful and supportive fri who have comforted us durin time.

RESOURCE



ARRANGEMENTS



Tributes Funeral Home

280 Summer Street
Boston, MA 02210
[View Map - Get Directions](#) →



www.tributes.com
280 Summer St, 4th floor
Boston, Ma 02210

Themes